

Agriculture

Capability Statement

FTP provide unambiguous, real-time visibility to clients' operations enabling data-driven decisions based on increased operational intelligence.

Our Company

FTP is a global technology company with headquarters in Perth.

As industries increase productivity, they increase in complexity. Employees and managers are forced to keep track of more and more variables in order to remain competitive. At FTP, we keep track of those variables for you.

Using our proprietary technology, we take the large streams of data modern companies generate, and present it through an easily understandable interface. This includes – but is not limited to – asset tracking, personnel tracking, network performance monitoring and RF planning. We also provide a round-the-clock support service to help our customers through any technical difficulties they may have.

We work with a wide range of different industries, including mining, marine and agriculture, providing our customers with real-time 24-hour data, as well as historical data. We will even analyse the information we collect and offer our advice on what can be improved. Our goal is to enable our customers to use the power of data by giving them ultimate vantage point on their business, so that they can make more informed and strategic decisions.

Our Values



Safety

Commitment to safety and wellbeing above all



People

Our people are the foundation of our success



Enduring Value

We target solutions to deliver value for all stakeholders

Our History

Founded in 2012, FTP was originally known as Forces Transitioning Personnel. Originally, the company's purpose was to help former military personnel transition to jobs in the mining industry. Very quickly, we became an important source of skilled labour for large and prestigious mining companies. Today the company is simply known as FTP.

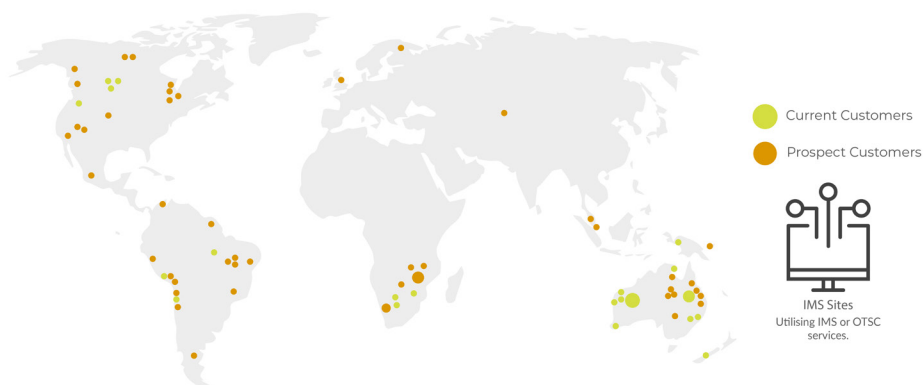
FTP soon noticed a gap in the market. We saw that mining companies rely on large amounts of collected data to operate safely and efficiently as do companies in many other industries. Most of these companies use cumbersome and often inefficient programs to represent and analyse that data, often failing to fully utilise the potential this data can deliver. Through the knowledge and experiences of the founders, this market gap was able to be addressed. At this point, key personnel were brought into the business and significant investment was made to create IMS (Integrated Management System) platform to bridge this gap. IMS is positioned to provide companies with better operational intelligence, providing them with a highly intuitive user interface and gives them the tools to maximise their productivity and make better business intelligence decisions.

IMS is a vendor agnostic digital platform. It collates data from a variety of third-party systems and presents them in an easy-to-understand, single window interface. Shortly after its development, OTSC (Operational Technology Support Centre) was created; a team of experienced engineers and support workers who are trained in our software. They are tasked with making sure that you get the most out of our platform.

In the years since we first developed IMS, FTP has expanded into several more industries. We aim to use our ground-breaking technology in as wide of a context as possible, so that businesses everywhere can stop working blind.

Global FTP Customers

FTP operates across the globe, with offices in Australia, Canada and New Zealand



Integrated Management System



IMS (Integrated Management System) is a vendor agnostic piece of software developed by FTP and catering specifically to the needs of the modern farm. This cutting-edge platform collates data from a variety of third-party systems and hardware and presents them in an easy-to-understand interface. It is a single end-to-end monitoring system that records and reports your farm data in real time, 24 hours a day.

IMS grants you access to key information geospatially, relative to exact locations on your farm. This bird's eye view of your operations allows you to monitor and track asset and animal performance and anticipate where and when issues might arise, enabling you to unlock vital performance gains. IMS is a fast, flexible and intuitive interface that gives you the ultimate vantage point on your business.



Readily Available Data

IMS gathers data from connected assets on your farm and presents them in a single-pane-of-glass. View your data in real-time or turn back the clock to identify past events.



Make Informed Decisions

IMS visualises data not only from connected devices on-site, but also pulls data from important external databases, applications and key on-farm systems to give farmers access to the information that's important to them.



Vendor Agnostic

FTP can pull data from any device that is connected to your network and display that data on the IMS platform.



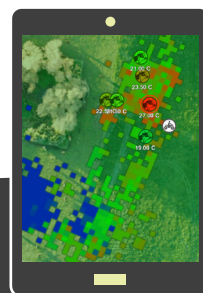
Resource Optimisation

With technology continually improving and demands in the agriculture sector increasing, effective communications are key to ensuring that all the tools available to farmers are available and performing. IMS provides the ability to set up cost-effective wireless wide-area networks in remote locations that can readily integrate the range of different devices and systems to run your operation.



Improve Operational Intelligence

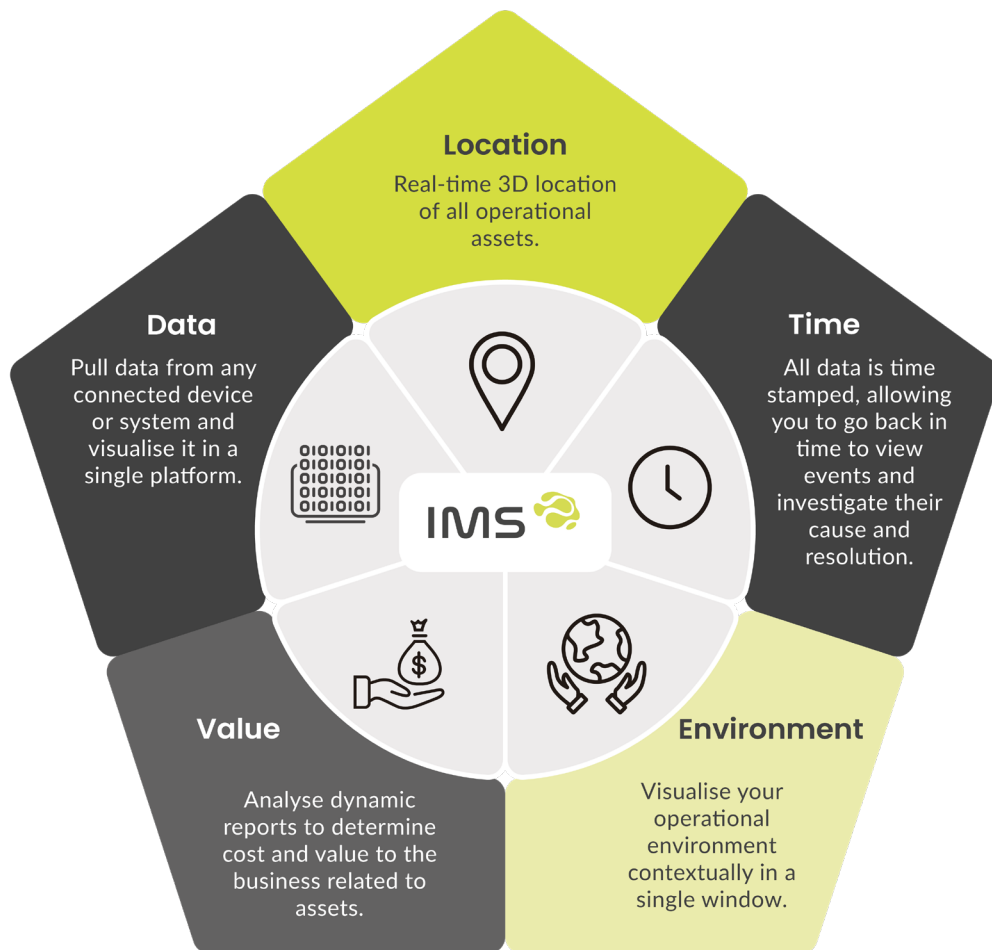
Operational Intelligence is vital to running an effective operation. It focuses on your day-to-day operations and ensures you are operating your business at maximum efficiency so that you can make more informed and accurate decisions.



Single Pane of Glass



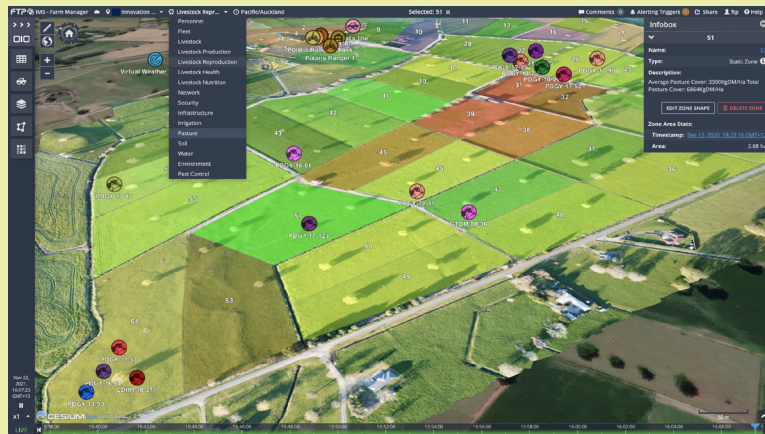
The power of IMS pulls 5 key aspects of every asset and displays them in a single pane of glass.



Connected Farm



Livestock Biometrics



Livestock data can be uploaded into IMS, providing farmers with data that is important to their operation.

These integrations can include:

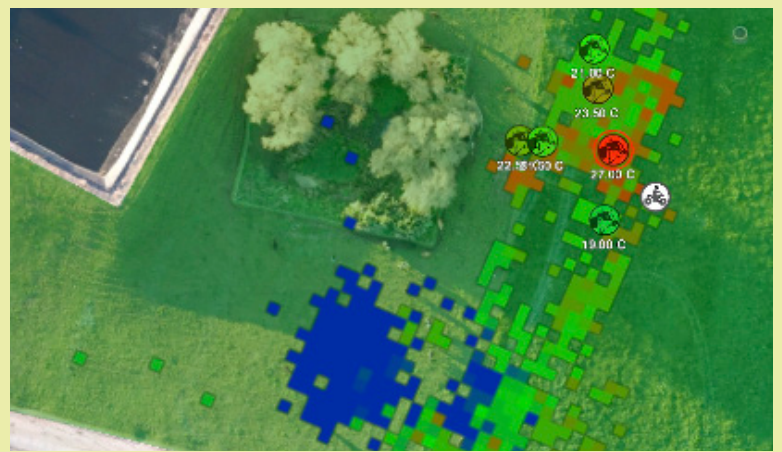
- Smart Wearable Data
- Herd Management
- Nutrition and Genetic Data

IMS provides a complete 360 degree view of your animals.

Geo-fenced Zones can be utilised to monitor livestock in each paddock allowing for better grazing rotations, detecting stock outside of boundaries and enabling herd and mob counts.

IMS Heatmaps can be used to visualise a variety of data points relating to farming operations. For example, livestock with a high temperature, indicated in red, enables a farmer visualise the last 12 hours of temperature data and animal movement, and to compare this to other cows in the same mob.

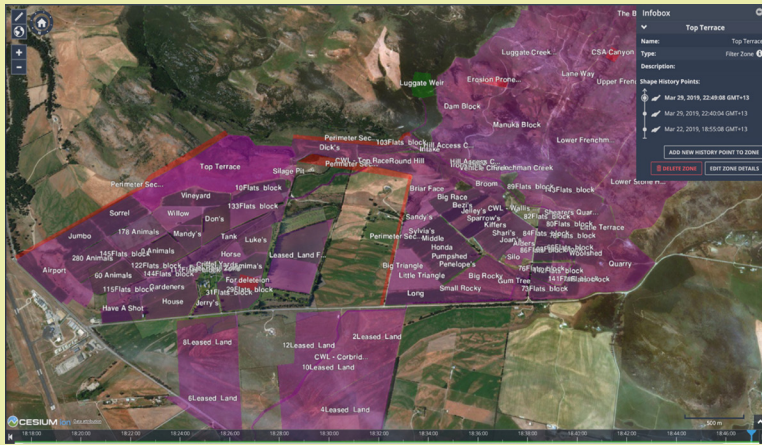
Heatmap Data



Too many apps and solutions on your computer screen, each one providing good insight into a single aspect of your farming operation?

IMS can solve these problems.

Data-enabled (geo) Zones



Paddocks and management areas on farm can be geo-fenced in IMS using the Zones feature.

IMS Zones are dynamic data containers that are used to monitor and report on changing conditions across a defined area.

Zones change colour based on the value of a monitored condition in the selected IMS View or can be coloured to denote certain area types.

Pasture cover can be manually or automatically updated with growth and available feed, automatically calculated and visualised per paddock.

The Map Layers feature in IMS can be used to visually overlay pasture health, slope, run-off areas and much more.

Feed and Pasture



Connected Farm



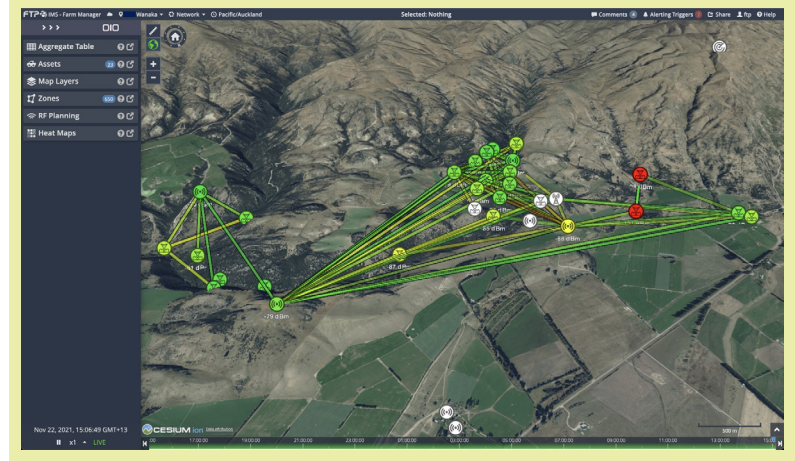
Plan and manage your wireless network across your farming operation from IMS, the ultimate vantage point for today's farms.

Ensure all the devices on a farm are connected and operating the way they should.

Using the Traffic Light System, IMS can help farmers quickly identify devices that are generating issues or have gone off-line.

With IMS gathering data from these devices in near real-time, the root cause of issues can be quickly identified and fixed.

Connected Operations



Analytics

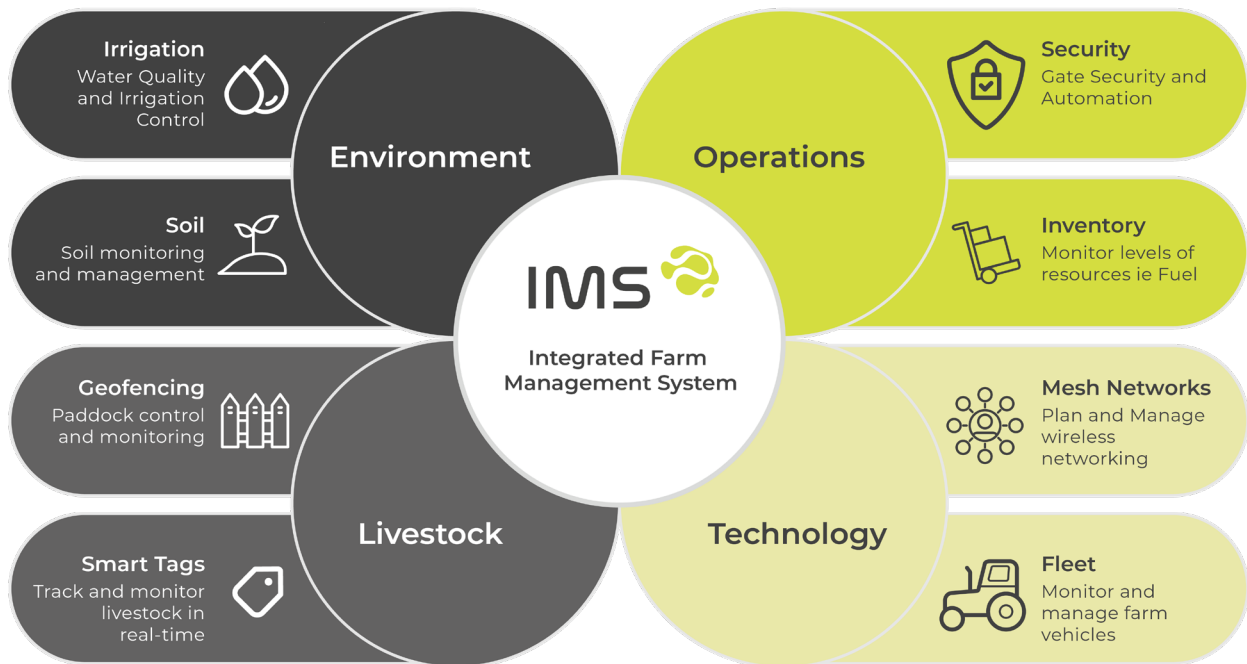


IMS provides farmers with powerful 'real-time' reporting. Its powerful analytic capabilities enable better planning and management of farming operations.

IMS is highly configurable and can generate reports that are tailored to suit a farmer's specific farming practices and ways of doing business.

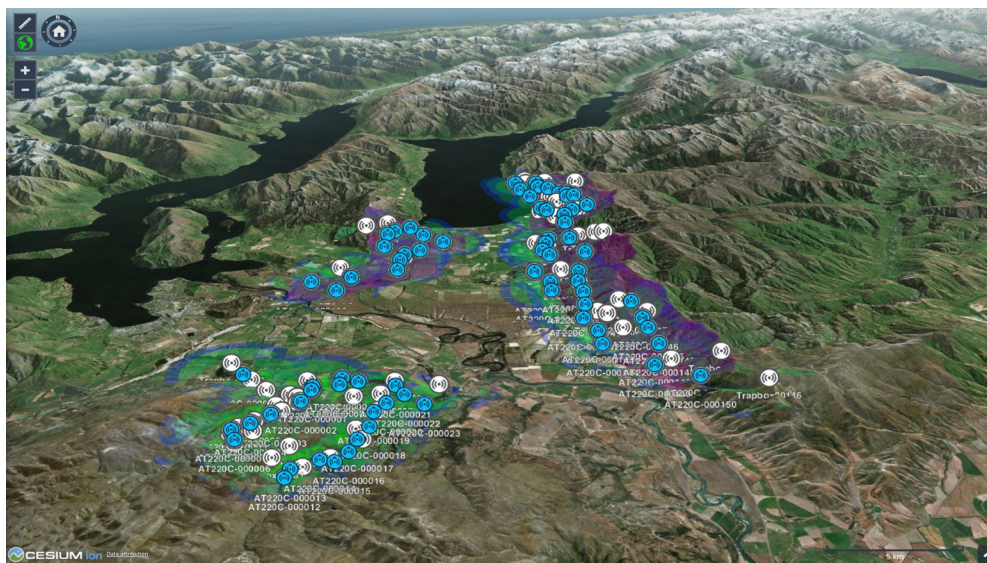
By using Triggers with pre-set values, defined by the farmer, reporting and alerts are generated that reduce down-time and allow the farmer to be more proactive in resolving issues.

With its "single pane of glass" philosophy IMS powerfully integrates data collected from a wide range of hardware devices as well as from external sources into a single farm management solution.



IMS consolidates multiple farm devices and systems into a single pane of glass and presents farmers with the information that is of most importance to them.

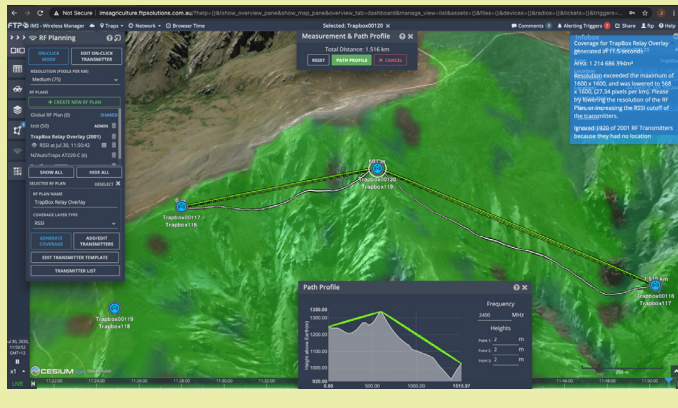
IMS gives Farmers the ultimate vantage point of their farm and data empowering them to make more informed operational decisions.



Connected Farm



Soil Monitoring



Utilising third-party multi-depth soil probes, IMS can monitor soil conditions to understand when to start or stop certain inputs such as irrigation, fertiliser or effluent.

Monitoring Volumetric Water Content, IMS can instruct irrigation systems to switch off in certain paddocks or inform the farmer to take action.

IMS can be configured to alert or automate certain procedures based on a defined threshold or criteria.

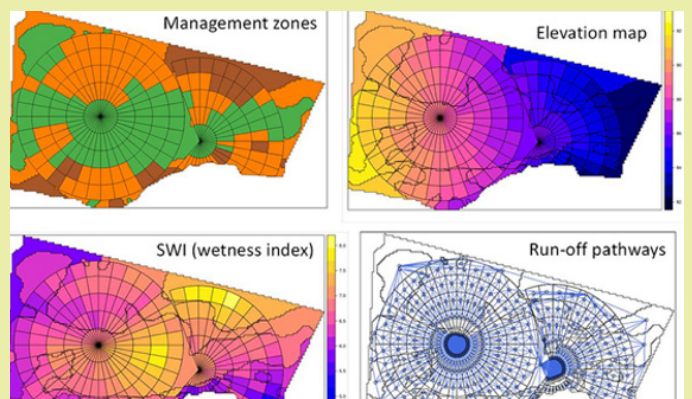
Third-party soil probes can monitor soil temperature and moisture as well as providing live data on key nutrients, respiration, aeration, acidity and salinity

IMS can remotely monitor and manage complex irrigations systems.

Integrating irrigations systems data into IMS, flow volumes and status can be visualised by the Traffic Light Systems allowing farmers to quickly identify areas being irrigated. IMS automatically records and visualises application data per paddock.

Linking these systems with Soil Monitoring tools gives a farmer greater control and visibility of their nutrient loading to control unwanted leeching.

Irrigation Control and Monitoring



On one screen you can generate multiple views of your farm to track, monitor and manage livestock, pasture and crops, farm equipment, environmental impacts, farm security, employee and contractor health and safety and much more.

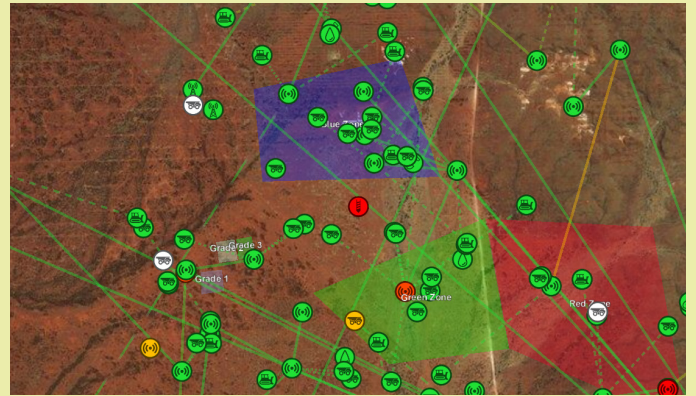
All connected farm vehicles can be tracked and monitored in IMS, giving farmers a broad overview of their assets and their status.

Vehicle data is imported live via CANBUS and EMS connected devices and visualised in IMS.

IMS can also monitor fuel systems and can trigger events based on defined re-fueling zones and security parameters, keeping farmers informed at all times.

IMS is your future proofed platform for Precision Agriculture and the 'Journey to Autonomy' as the world moves further towards robotics and automation in agriculture.

Fleet Management



Health and Safety



Managing and reporting Health and Safety is vital to any operation.

Connecting with a fleet management system, IMS can alert farmers when a rollover occurs, a vehicle is speeding or experiences an impact.

Tracking staff and contractors can easily be monitored in IMS, with alerts being triggered when a person requests help via SOS or a workers vital signs deteriorate.

With all your data being collected in IMS, farmers can generate reports that help farmers comply with health and safety and wellbeing requirements and undertake thorough incident analysis.

ftpsolutions.co.nz



FTP Australia

info@ftpsolutions.com.au

FTP New Zealand

info@ftpsolutions.co.nz

FTP Canada

sales@ftpsolutions.com